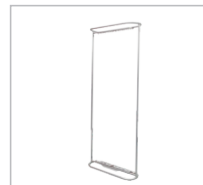


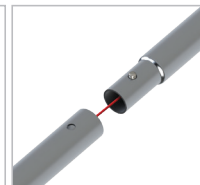


Description

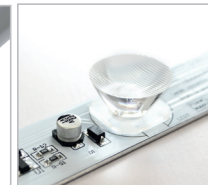
- Ability to vary the height from 2 m to 2.38 m
- 380 mm extension included
- Aluminium tubing (Ø 30 mm)
- LED lights, transformator and clips for LED lights included
- Additional weight at the bottom of the construction
- Transport bag included
- Tension fit zipped fabric graphics



Structure



Bungeed push
button lock

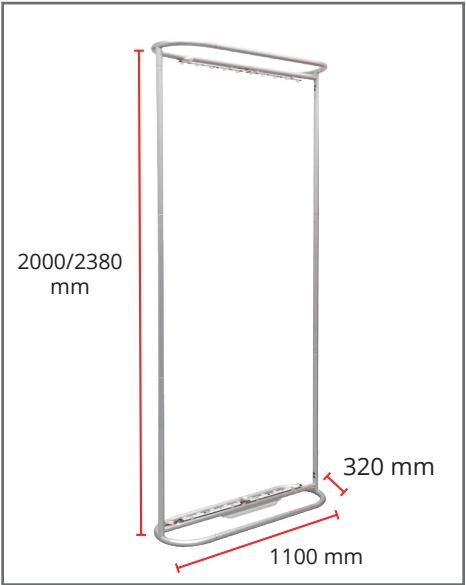


LED strip lighting

Tension Banners

FORMULATE MONOLITH LED

V1



LED lighting: 18 LED bulbs
960 x 23 mm
6 mounting clips

Transformer: AC 110/240V
DC 24V
2 mounting clips

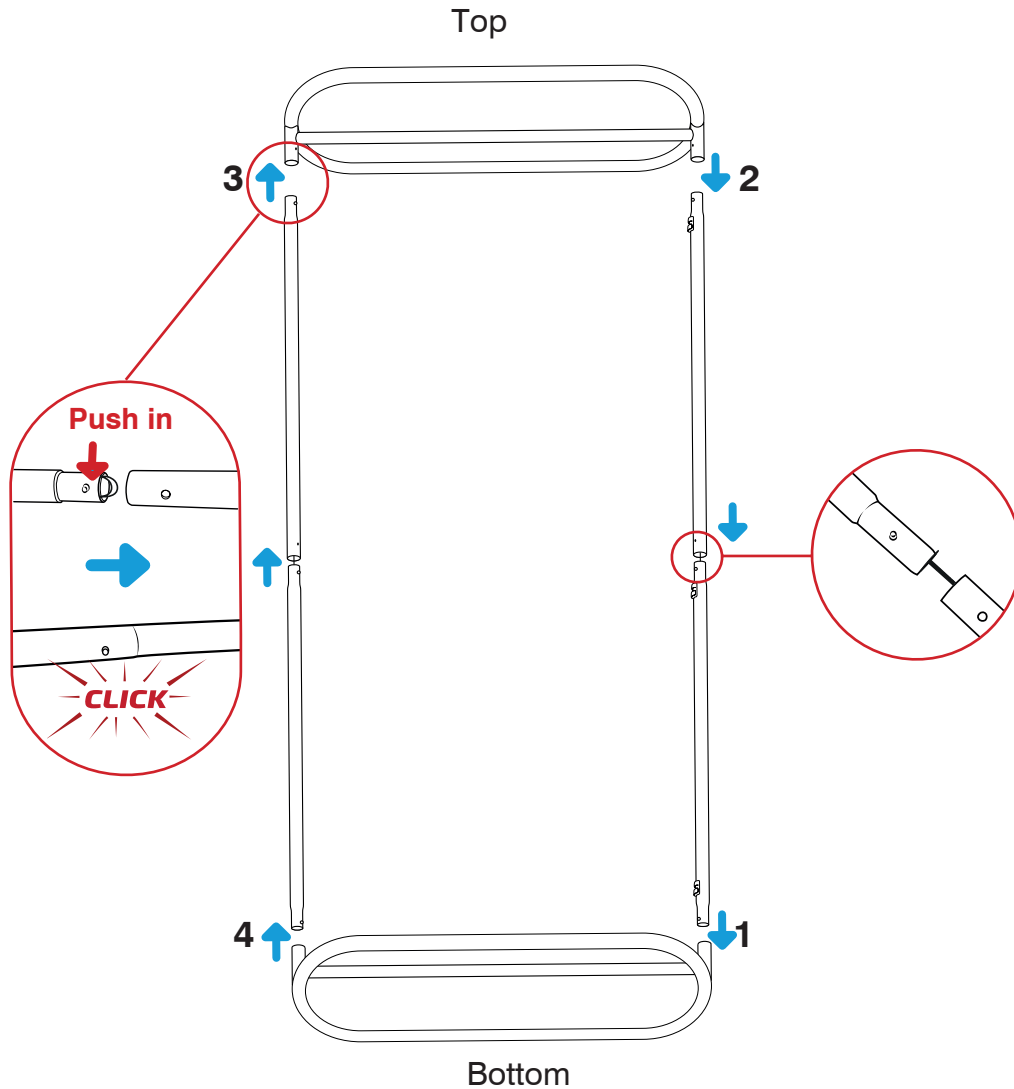
Cable info: 4 cables included => 1 power cable (3m),
3 low voltage cables (1500, 500 and 200 mm)

Structure

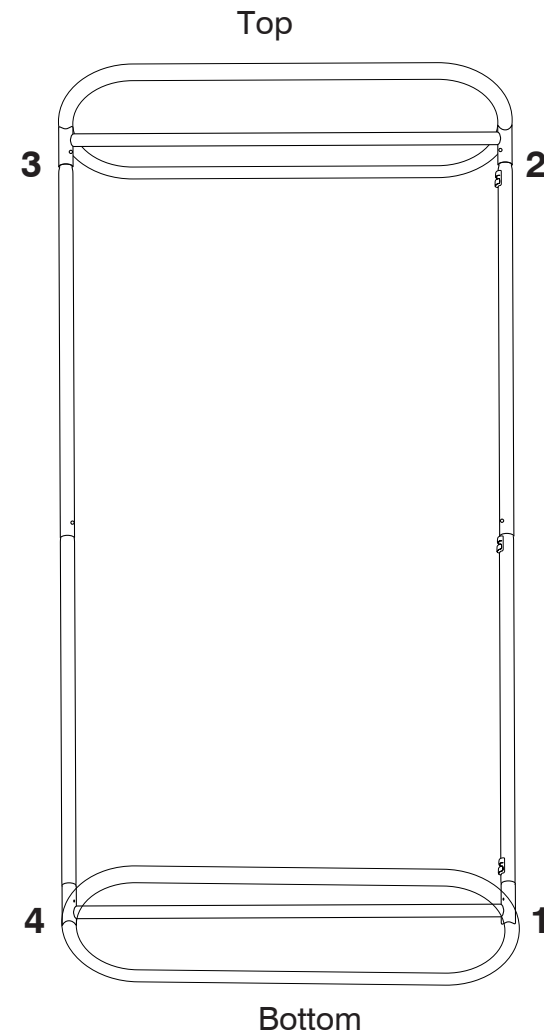
Code	Description	Hardware Dimensions (h x w x d mm)	System Weight	System Weight in bag	Parcel dimensions (h x w x d mm)	Parcel Weight
FORM-MON-LED-1100	Formulate Monolith LED	2300/2380 x 1100 x 320	7,8 kg	11 kg	360 x 1170 x 365	12 kg

Assembly

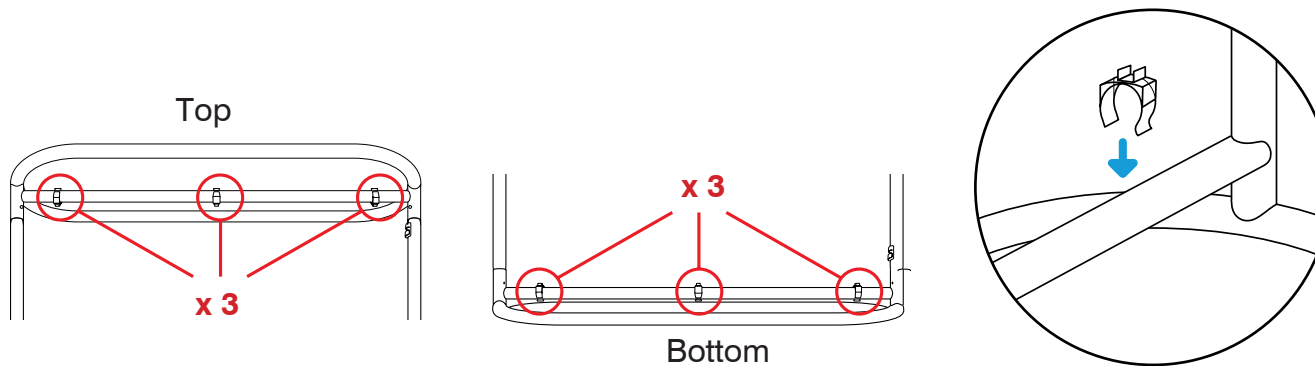
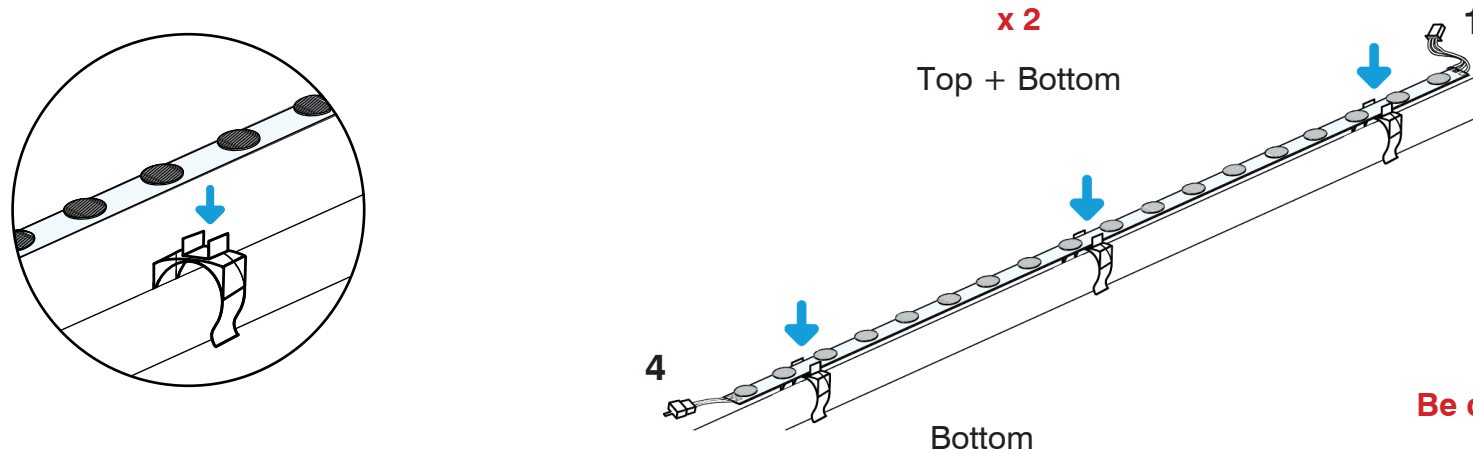
1



2

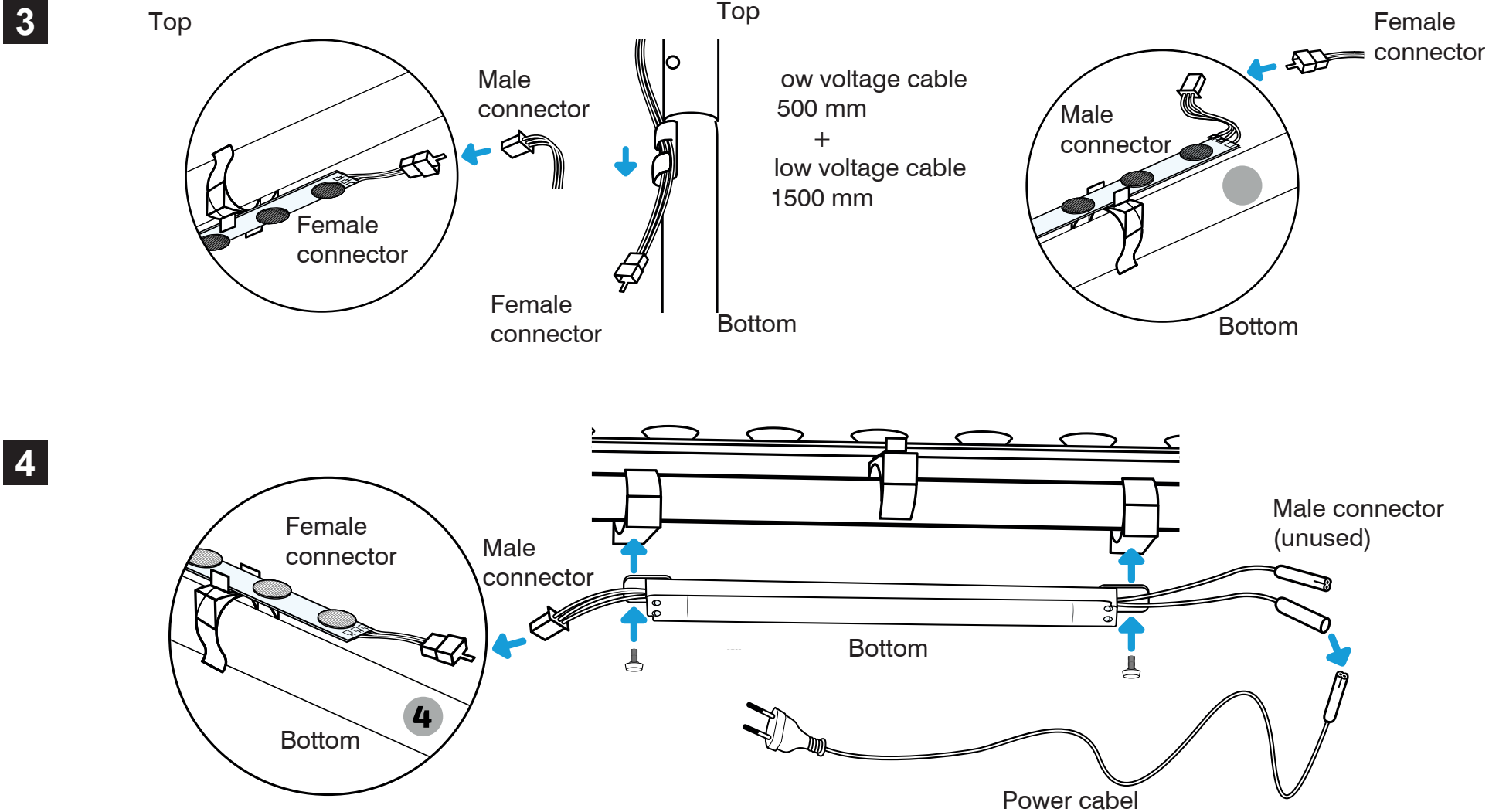


Installation of LED strips

1**2**

Be careful with the heat of the LED strip lights after use.

LED strip connection



Graphics assembly

